

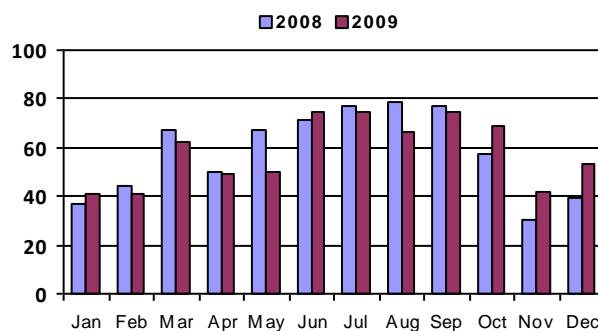
December 2009 - Real Estate Market Statistics



Broomfield - BRM

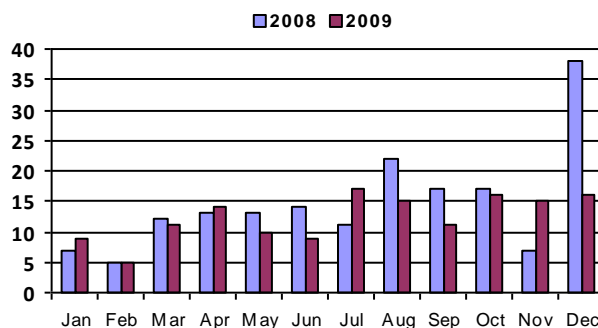
Closed Residential

Category	Dec-08	Dec-09	% Change
#Of Closed Sales - Month	39	53	35.9%
#Of Closed Sales - YTD	695	698	0.4%
Avg. Days On Market	119	83	-30.3%
# Of Active Listings	271	197	-27.3%
# Of NEW Listings	83	59	-28.9%
Absorption Rate (in months)	7.7	4.4	-42.7%
Average Price (Sold)	364,019	330,348	-9.2%



Closed Condo

Category	Dec-08	Dec-09	% Change
#Of Closed Sales - Month	38	16	-57.9%
#Of Closed Sales - YTD	176	148	-15.9%
Avg. Days On Market	171	109	-36.3%
# Of Active Listings	62	51	-17.7%
# Of NEW Listings	44	7	-84.1%
Absorption Rate (in months)	1.9	3.7	89.4%
Average Price (Sold)	239,227	181,142	-24.3%



Land Title Guarantee Company

<http://www.ltgc.com>

Based on information from Metrolist, Inc. for the period Jan 2007 through present. Note: This representation is based in whole or in part on data supplied by Metrolist, Inc. Metrolist, Inc. does not guarantee nor is in any way responsible for its accuracy. Data maintained by metrolist, Inc. may not reflect all real estate activity in the market.