

# October 2013 - Real Estate Market Statistics

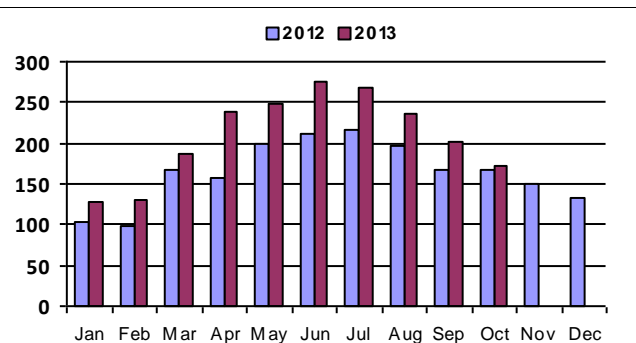


## Douglas County West - DCW

Includes - Castle Rock, Larkspur, Sedalia, Palmer Lake, part of Littleton

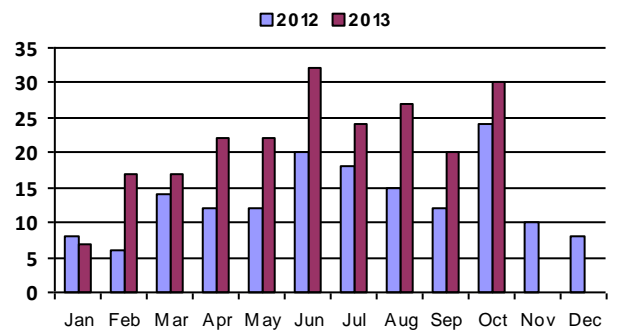
### Closed Residential

Category	Oct-12	Oct-13	% Change
#Of Closed Sales - Month	168	173	3.0%
#Of Closed Sales - YTD	1,686	2,089	23.9%
Avg. Days On Market	76	67	-11.8%
# Of Active Listings	681	732	7.5%
# Of NEW Listings	193	231	19.7%
Absorption Rate (in months)	4.5	4.6	2.3%
Average Price (Sold)	380,961	421,694	10.7%



### Closed Condo

Category	Oct-12	Oct-13	% Change
#Of Closed Sales - Month	24	30	25.0%
#Of Closed Sales - YTD	141	218	54.6%
Avg. Days On Market	82	56	-31.7%
# Of Active Listings	29	80	175.9%
# Of NEW Listings	14	42	200.0%
Absorption Rate (in months)	1.4	6.7	384.8%
Average Price (Sold)	150,947	461,254	205.6%



One company has it all.  
**Guarantee(d).**

<http://www.ltgc.com>

Based on Information from Metrolist, Inc. for the period Jan 2010 through present. Note: This representation is based in whole or in part on data supplied by Metrolist, Inc. Metrolist, Inc. does not guarantee nor is in any way responsible for its accuracy. Data maintained by metrolist, Inc. may not reflect all real estate activity in the market.