

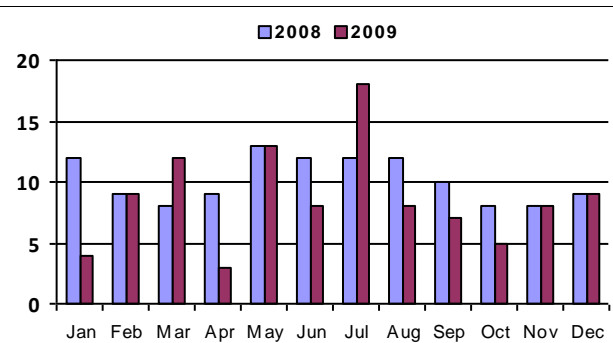
December 2009 - Real Estate Market Statistics



Mountain Jefferson County - MJC

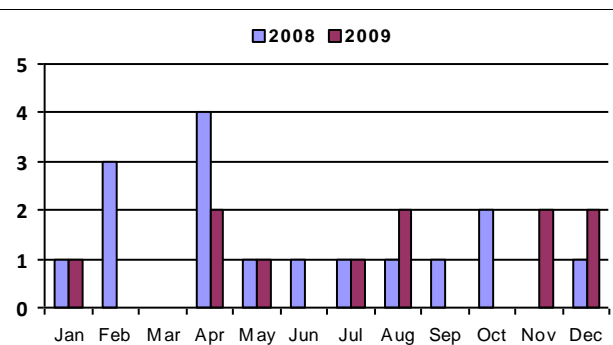
Closed Residential

Category	Dec-08	Dec-09	% Change
#Of Closed Sales - Month	9	9	0.0%
#Of Closed Sales - YTD	122	104	-14.8%
Avg. Days On Market	185	76	-58.9%
# Of Active Listings	112	108	-3.6%
# Of NEW Listings	19	12	-36.8%
Absorption Rate (in months)	14.2	14.	-1.6%
Average Price (Sold)	584,111	531,722	-9.0%



Closed Condo

Category	Dec-08	Dec-09	% Change
#Of Closed Sales - Month	1	2	100.0%
#Of Closed Sales - YTD	16	11	-31.3%
Avg. Days On Market		68	#Div/0!
# Of Active Listings	9	9	0.0%
# Of NEW Listings	1		-100.0%
Absorption Rate (in months)	13.	4.5	-65.4%
Average Price (Sold)	154,650	200,000	29.3%



Land Title Guarantee Company

<http://www.ltgc.com>

Based on information from Metrolist, Inc. for the period Jan 2007 through present. Note: This representation is based in whole or in part on data supplied by Metrolist, Inc. Metrolist, Inc. does not guarantee nor is in any way responsible for its accuracy. Data maintained by metrolist, Inc. may not reflect all real estate activity in the market.