

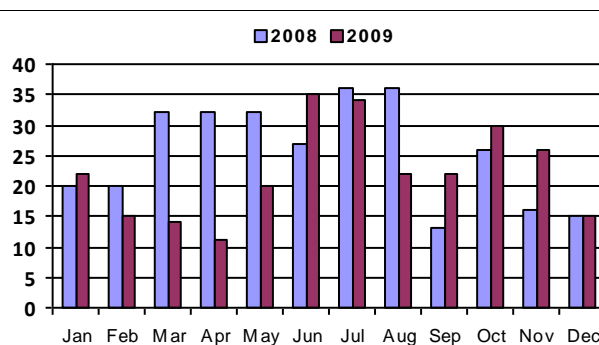
December 2009 - Real Estate Market Statistics



North Northwest Suburban - NNW

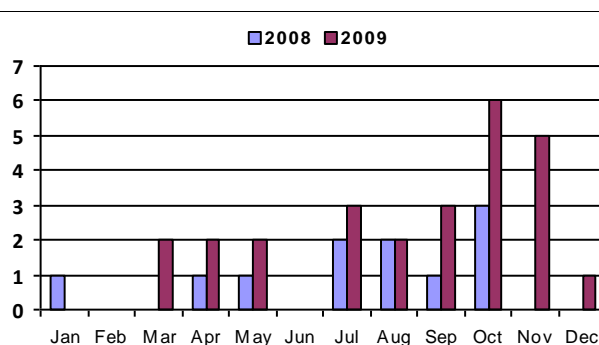
Closed Residential

Category	Dec-08	Dec-09	% Change
#Of Closed Sales - Month	15	15	0.0%
#Of Closed Sales - YTD	305	266	-12.8%
Avg. Days On Market	50	53	6.0%
# Of Active Listings	148	146	-1.4%
# Of NEW Listings	16	23	43.8%
Absorption Rate (in months)	11.8	10.6	-10.2%
Average Price (Sold)	254,173	307,570	21.0%



Closed Condo

Category	Dec-08	Dec-09	% Change
#Of Closed Sales - Month		1	#Div/0!
#Of Closed Sales - YTD	11	26	136.4%
Avg. Days On Market		35	#Div/0!
# Of Active Listings	16	13	-18.8%
# Of NEW Listings	4		-100.0%
Absorption Rate (in months)	.	18.	#Div/0!
Average Price (Sold)		143,500	#Div/0!



Land Title Guarantee Company

<http://www.ltgc.com>

Based on information from Metrolist, Inc. for the period Jan 2007 through present. Note: This representation is based in whole or in part on data supplied by Metrolist, Inc. Metrolist, Inc. does not guarantee nor is in any way responsible for its accuracy. Data maintained by metrolist, Inc. may not reflect all real estate activity in the market.