

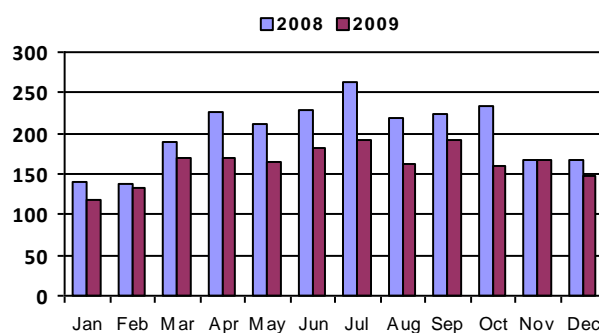
December 2009 - Real Estate Market Statistics



North Suburban Central - NSC

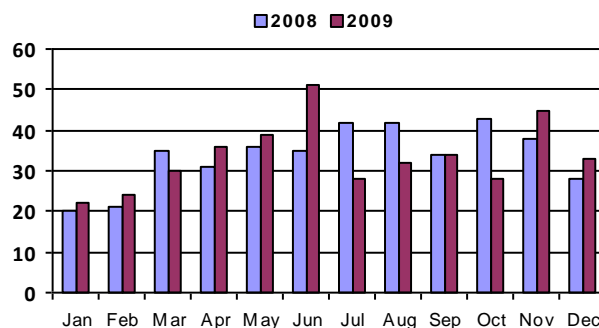
Closed Residential

Category	Dec-08	Dec-09	% Change
#Of Closed Sales - Month	167	148	-11.4%
#Of Closed Sales - YTD	2,411	1,962	-18.6%
Avg. Days On Market	76	57	-25.0%
# Of Active Listings	551	435	-21.1%
# Of NEW Listings	204	167	-18.1%
Absorption Rate (in months)	3.6	3.1	-15.5%
Average Price (Sold)	167,213	181,847	8.8%



Closed Condo

Category	Dec-08	Dec-09	% Change
#Of Closed Sales - Month	28	33	17.9%
#Of Closed Sales - YTD	405	402	-0.7%
Avg. Days On Market	95	54	-43.2%
# Of Active Listings	147	91	-38.1%
# Of NEW Listings	57	27	-52.6%
Absorption Rate (in months)	5.	3.	-40.6%
Average Price (Sold)	101,316	127,592	25.9%



Land Title Guarantee Company

<http://www.ltgc.com>

Based on information from Metrolist, Inc. for the period Jan 2007 through present. Note: This representation is based in whole or in part on data supplied by Metrolist, Inc. Metrolist, Inc. does not guarantee nor is in any way responsible for its accuracy. Data maintained by metrolist, Inc. may not reflect all real estate activity in the market.