

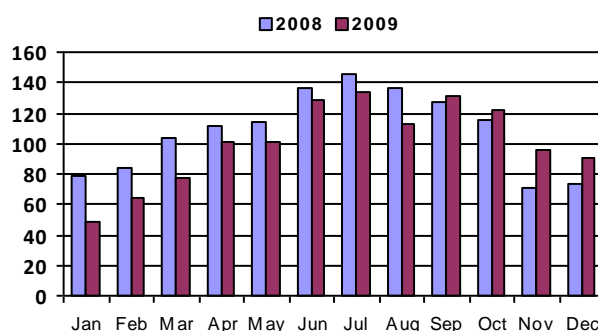
December 2009 - Real Estate Market Statistics



South Suburban Central - SSC

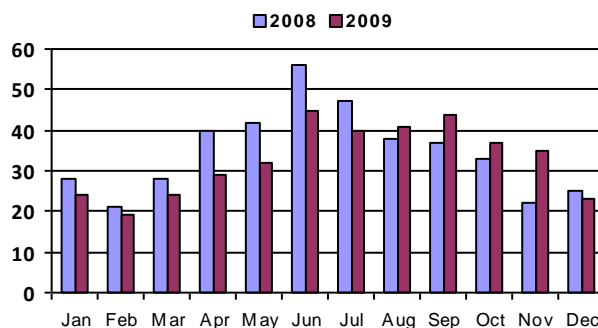
Closed Residential

Category	Dec-08	Dec-09	% Change
#Of Closed Sales - Month	73	91	24.7%
#Of Closed Sales - YTD	1,297	1,207	-6.9%
Avg. Days On Market	84	71	-15.5%
# Of Active Listings	466	428	-8.2%
# Of NEW Listings	146	132	-9.6%
Absorption Rate (in months)	7.1	5.3	-25.7%
Average Price (Sold)	323,038	279,515	-13.5%



Closed Condo

Category	Dec-08	Dec-09	% Change
#Of Closed Sales - Month	25	23	-8.0%
#Of Closed Sales - YTD	417	393	-5.8%
Avg. Days On Market	107	76	-29.0%
# Of Active Listings	144	145	0.7%
# Of NEW Listings	36	31	-13.9%
Absorption Rate (in months)	6.7	7.3	9.3%
Average Price (Sold)	156,528	171,748	9.7%



Land Title Guarantee Company

<http://www.ltgc.com>

Based on information from MetroList, Inc. for the period Jan 2007 through present. Note: This representation is based in whole or in part on data supplied by MetroList, Inc. MetroList, Inc. does not guarantee nor is in any way responsible for its accuracy. Data maintained by MetroList, Inc. may not reflect all real estate activity in the market.