

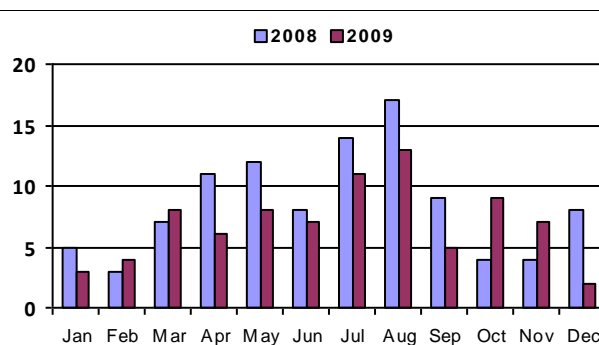
# December 2009 - Real Estate Market Statistics



Superior - SUP

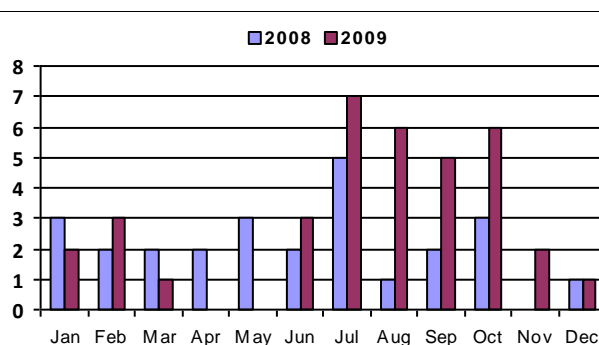
## Closed Residential

Category	Dec-08	Dec-09	% Change
#Of Closed Sales - Month	8	2	-75.0%
#Of Closed Sales - YTD	102	83	-18.6%
Avg. Days On Market	126	28	-77.8%
# Of Active Listings	27	13	-51.9%
# Of NEW Listings	5	3	-40.0%
Absorption Rate (in months)	4.3	12.	182.4%
Average Price (Sold)	403,504	412,750	2.3%



## Closed Condo

Category	Dec-08	Dec-09	% Change
#Of Closed Sales - Month	1	1	0.0%
#Of Closed Sales - YTD	26	36	38.5%
Avg. Days On Market	67	282	320.9%
# Of Active Listings	11	2	-81.8%
# Of NEW Listings		1	#Div/0!
Absorption Rate (in months)	15.	4.	-73.3%
Average Price (Sold)	150,000	540,613	260.4%



# Land Title Guarantee Company

<http://www.ltgc.com>

Based on information from Metrolist, Inc. for the period Jan 2007 through present. Note: This representation is based in whole or in part on data supplied by Metrolist, Inc. Metrolist, Inc. does not guarantee nor is in any way responsible for its accuracy. Data maintained by metrolist, Inc. may not reflect all real estate activity in the market.