

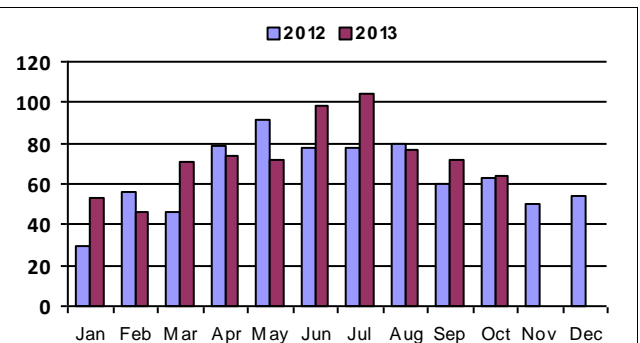
October 2013 - Real Estate Market Statistics



Broomfield - BRM

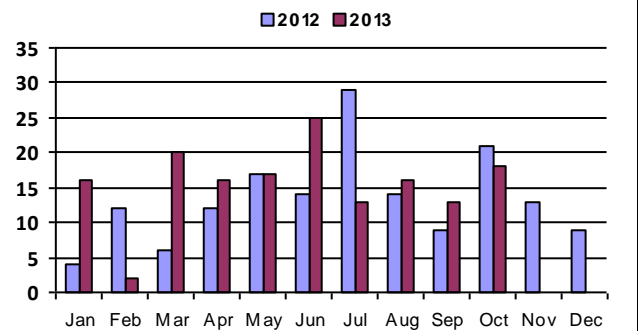
Closed Residential

Category	Oct-12	Oct-13	% Change
#Of Closed Sales - Month	63	64	1.6%
#Of Closed Sales - YTD	661	731	10.6%
Avg. Days On Market	52	31	-40.4%
# Of Active Listings	145	170	17.2%
# Of NEW Listings	64	81	26.6%
Absorption Rate (in months)	2.5	2.9	14.5%
Average Price (Sold)	319,034	361,826	13.4%



Closed Condo

Category	Oct-12	Oct-13	% Change
#Of Closed Sales - Month	21	18	-14.3%
#Of Closed Sales - YTD	138	156	13.0%
Avg. Days On Market	92	100	8.7%
# Of Active Listings	36	50	38.9%
# Of NEW Listings	16	38	137.5%
Absorption Rate (in months)	1.8	5.8	227.9%
Average Price (Sold)	250,837	471,078	87.8%



One company has it all.
Guarantee(d).

<http://www.ltgc.com>

Based on Information from Metrolist, Inc. for the period Jan 2010 through present. Note: This representation is based in whole or in part on data supplied by Metrolist, Inc. Metrolist, Inc. does not guarantee nor is in any way responsible for its accuracy. Data maintained by metrolist, Inc. may not reflect all real estate activity in the market.