

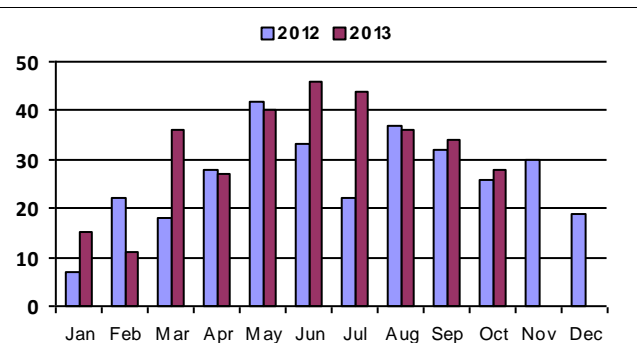
# October 2013 - Real Estate Market Statistics



## Mountain Conifer Pine - MCP

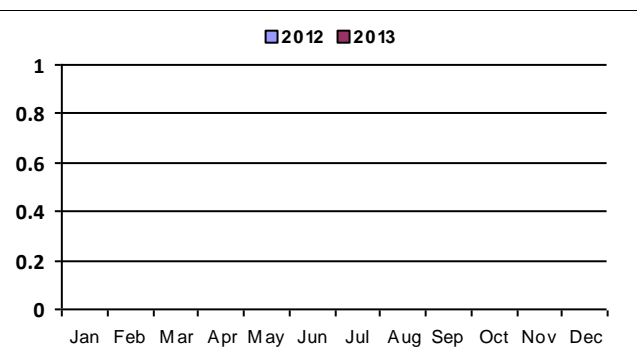
### Closed Residential

Category	Oct-12	Oct-13	% Change
#Of Closed Sales - Month	26	28	7.7%
#Of Closed Sales - YTD	267	317	18.7%
Avg. Days On Market	102	57	-44.1%
# Of Active Listings	159	170	6.9%
# Of NEW Listings	35	37	5.7%
Absorption Rate (in months)	7.2	7.6	6.3%
Average Price (Sold)	335,571	347,121	3.4%



### Closed Condo

Category	Oct-12	Oct-13	% Change
#Of Closed Sales - Month			#Num!
#Of Closed Sales - YTD			#Num!
Avg. Days On Market			#Num!
# Of Active Listings			#Num!
# Of NEW Listings			#Num!
Absorption Rate (in months)	.	.	#Num!
Average Price (Sold)			#Num!



One company has it all.  
**Guarantee(d).**

<http://www.ltgc.com>

Based on Information from Metrolist, Inc. for the period Jan 2010 through present. Note: This representation is based in whole or in part on data supplied by Metrolist, Inc. Metrolist, Inc. does not guarantee nor is in any way responsible for its accuracy. Data maintained by metrolist, Inc. may not reflect all real estate activity in the market.