

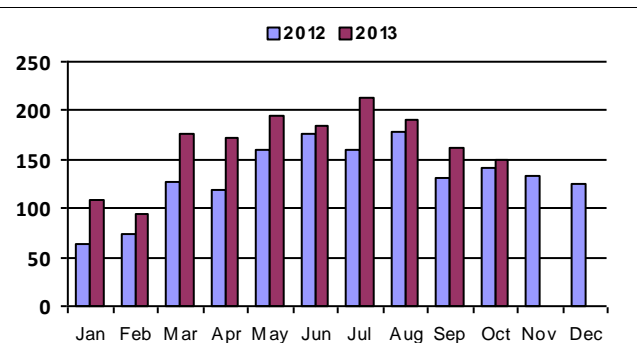
October 2013 - Real Estate Market Statistics



South Suburban Central - SSC

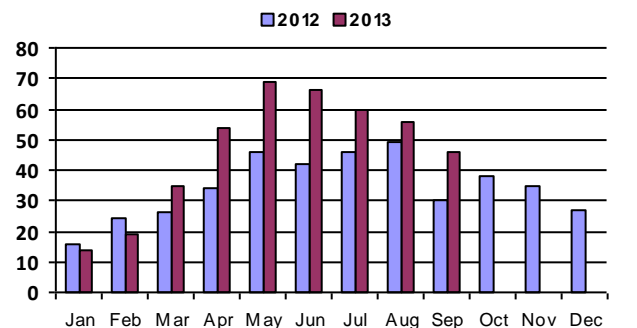
Closed Residential

Category	Oct-12	Oct-13	% Change
#Of Closed Sales - Month	142	150	5.6%
#Of Closed Sales - YTD	1,330	1,648	23.9%
Avg. Days On Market	54	41	-24.1%
# Of Active Listings	281	249	-11.4%
# Of NEW Listings	149	158	6.0%
Absorption Rate (in months)	2.2	1.8	-19.9%
Average Price (Sold)	370,703	371,683	0.3%



Closed Condo

Category	Oct-12	Oct-13	% Change
#Of Closed Sales - Month	38		-100.0%
#Of Closed Sales - YTD	351	419	19.4%
Avg. Days On Market	24		-100.0%
# Of Active Listings	42		-100.0%
# Of NEW Listings	34		-100.0%
Absorption Rate (in months)	1.6	.	-100.0%
Average Price (Sold)	173,466		-100.0%



One company has it all.
Guarantee(d).

<http://www.ltgc.com>

Based on Information from Metrolist, Inc. for the period Jan 2010 through present. Note: This representation is based in whole or in part on data supplied by Metrolist, Inc. Metrolist, Inc. does not guarantee nor is in any way responsible for its accuracy. Data maintained by metrolist, Inc. may not reflect all real estate activity in the market.