

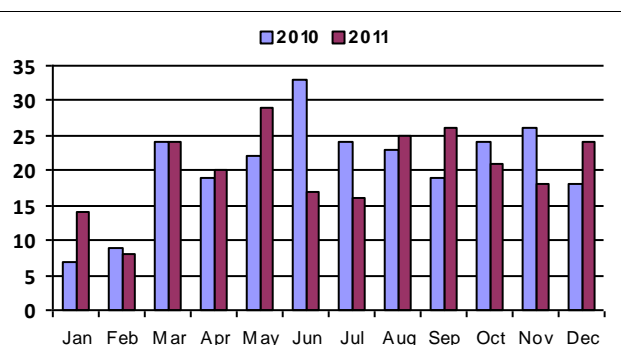
# December 2011 - Real Estate Market Statistics



## Mountain Conifer Pine - MCP

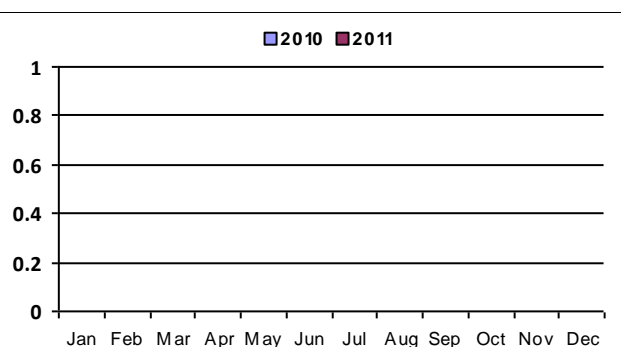
### Closed Residential

Category	Dec-10	Dec-11	% Change
#Of Closed Sales - Month	18	24	33.3%
#Of Closed Sales - YTD	248	242	-2.4%
Avg. Days On Market	137	218	59.1%
# Of Active Listings	193	175	-9.3%
# Of NEW Listings	31	24	-22.6%
Absorption Rate (in months)	12.9	8.1	-37.2%
Average Price (Sold)	310,039	372,466	20.1%



### Closed Condo

Category	Dec-10	Dec-11	% Change
#Of Closed Sales - Month			#Num!
#Of Closed Sales - YTD			#Num!
Avg. Days On Market			#Num!
# Of Active Listings			#Num!
# Of NEW Listings			#Num!
Absorption Rate (in months)	.	.	#Num!
Average Price (Sold)			#Num!



# Land Title Guarantee Company

<http://www.ltgc.com>

Based on Information from Metrolist, Inc. for the period Jan 2009 through present. Note: This representation is based in whole or in part on data supplied by Metrolist, Inc. Metrolist, Inc. does not guarantee nor is in any way responsible for its accuracy. Data maintained by metrolist, Inc. may not reflect all real estate activity in the market.